

Manyet Dance

NEWSLETTER

Happy
New Year

JANUARY 2025

WELCOME BACK!

Happy New Year and welcome to 2025! Classes resume the week of 1/6 and recital prep will now be in full swing!



WINTER SESSION

The 2025 5-week Winter Session will take place from February 3-March 8, 2025. If you are currently enrolled in a year long class you do NOT need to register for this intersession unless you would like to try a new class. This is a great opportunity to try a dance class without the commitment of recital or a year long class. View the schedule and register at bit.ly/mandan

Watch weeks are an opportunity for you to view your dancers' progress so far this year. The second round of watch weeks will take place January 20-25 for those in classrooms HH2 and CS2 and January 27-February 1 for those in classrooms HH1 and CS1. Please prepare as only ONE ADULT WATCHER PER DANCER IS PERMITTED IN THE CLASSROOM DURING WATCH WEEK. No other children or additional family members are permitted.

TUITION

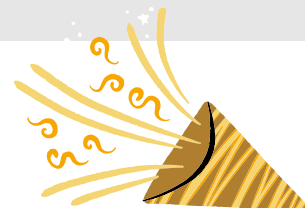
Session 3 tuition and 2nd installment recital bundle fees are due JANUARY 20, 2025. PLEASE REVIEW YOUR ACCOUNT AND ENSURE ALL CHARGES ARE ACCURATE. Automatic payments will run on all unpaid accounts on 1/20/24.

IMPORTANT DATES

- 11/20: SESSION 3 TUITION
- 1/20: 2ND RECITAL BUNDLE FEE DUE
- 1/20: 2ND TROUPE BUNDLE PAYMENT DUE
- 1/20-1/25: WATCH WEEK #2 HH2 & CS2
- 1/27-2/1: WATCH WEEK #2 HH1 & CS1

INCLEMENT WEATHER

Canceled classes due to inclement weather will be notified via email and on social media. Please take a moment to familiarize yourself with our inclement weather policy which can be found in the Manyet Handbook.



2025 RECITALS

SMALL SHOWS

SATURDAY, MAY 10, 2025
REHEARSALS MORNING OF

1:30P SHOW REHEARSAL: 8:15A

SAT 9:15A
HH1 1.5 HR
W/ MS. LISA

SAT 9:15A
HH2 1.25HR
W/ MS. MACI

SAT 10:30A
HH2 1.5HR
W/MS. MEGAN

SAT 10:45A
HH1 1HR
W/ MS. LISA

+ ALL TROUPE
PRODUCTION, MINIS,
PPDT, JDT (TAP),
SDT/EDT(TAP),
EDT (LYRICAL)

4:00P SHOW REHEARSAL: 9:30A

MON 5:15P
HH2 HIP HOP
W/MS. ABBY

MON 5:30P
CS1 1HR
W/ MS TAYLOR ANNE

MON 6:30P
CS1 TINY TUNES
W/ MS. TAYLOR ANNE

TUES 7:15P
HH1 AD TAP
W/ MS. LISA

WED 6:00P
HH1 HIP HOP
W/ MS. ABBY

THU 4:00P
HH2 1.5HR
W/ MS. LISA

THU 5:00P
CS1 1.5HR
W/ MS. JENNA

THU 5:30P
HH2 1.25HR
W/ MS. ALISHA

+ ALL TROUPE
PRODUCTION, EDT
(LYRICAL), SHOW,
JR HIP HOP

6:30P SHOW REHEARSAL: 10:45A

MON 5:00P
CS2 1.25HR
W/MS. ALISHA

TUE 4:30P
CS1 1HR
W/ MS. JENNA

TUE 4:45P
HH2 HIP HOP
W/MS. ABBY

TUE 5:30P
CS1 1.5HR
W/ MS. JENNA

WED 7:00P
CS2 AD BAL/JAZZ
W/MS. EMILY

FRI 9:45A
CS1 1HR
W/ MS. MACI/ABBY

+ EDT (LYRICAL),
EDT/SDT (TAP), JDT
(TAP), HIP HOP

LARGE SHOWS

SATURDAY, MAY 17, 2025
REHEARSAL: MAY 16TH
CLASSES PARTICIPATE IN BOTH
RECITAL TIMES OF 1:30P & 6:30P

MON 4:00P
HH2 2HR

MON 6:00P
HH1 2HR

MON 6:00P
HH2 2 HR

MON 8:00P
HH1 AD ADV BTJ

TUE 4:15P
HH1 2 HR

TUE 6:30P
HH2 LYRICAL

TUE 7:30P
HH2 LYRICAL

WED 4:00P
CS1 1.75HR

WED 4:00P
HH1 2HR

WED 5:00P
CS2 POINTE

WED 5:15P
CS2 1.75HR

WED 6:00P
CS1 2HR

WED 6:00P
HH2 2HR

WED 7:45P
HH1 ADV HIP HOP

THU 4:45P
HH1 HIP HOP

THU 5:45P
CS2 2HR

SAT 10:00A
CS1 2HR

+ ALL TROUPES: ELITE,
SENIOR, JUNIOR, POWDER
PUFF, MINIS, SHOW, HIP
HOP, JR HIP HOP